

Gohikuka Bridge Project



Integrated
Community
Training

Sustainability in Ownership

Gohikuka Bridge Project

Give a man a fish and you feed him for a day.
Teach him to fish and feed him for a lifetime.

We are sending containers of second hand goods to Papua New Guinea to raise money to build a bridge over the Gohikuka River.

We are partnering with community groups and business people to create social and business opportunities for communities in Papua New Guinea.

We need your help. We need to raise \$50,000 to build the bridge.

We need donations of good quality second hand clothes, furniture and household items

We also want to send items such as lawn mowers, sewing machines and cooking appliances that locals can use to create business opportunities.

Lastly, we are always looking for education and training materials.

Please contact our Community Development Coordinator if you would like to donate,

For more information, please see
www.integratedcommunitytraining.com

Contact Details:

Miriam Murphy

Phone: 0429 62 0398

Email: miriam@integratedcommunitytraining.com



Gohikuka Bridge Project

What do you do when 3000 people need to cross a steep and sometimes dangerous river crossing?

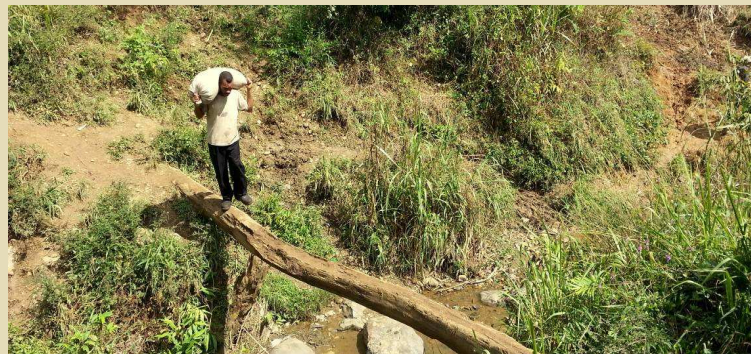
You build a bridge of course!

Or so it would normally be; except that Gohikuka is too close to Goroka to be considered remote, and too far out of town to be of interest to town planning.



Locals built a log bridge in 2008. This bridge survived less than two years before flood damage and general degradation rendered it impassable to all but foot traffic, and less than 1 year more to become dangerous for pedestrians.

In the meantime increasing population pressure is making it harder and harder to find suitable timbers for bridge building.



In fact, the crossing is now sufficiently dangerous that people frequently fall into the river, often as not losing their bilums of market produce

Can you help us build a bridge? Do you want to join us on one of our trips over – the accommodation is highly memorable – or can you help us raise money with donations of second hand goods?

See www.integratedcommunitytraining.com for more details

Rebuilding the Gohikuka Bridge is about giving people the tools to help themselves

There are 14 communities and over 3000 people that depend on this crossing to access:

- Markets,
- Job opportunities,
- Government services
- Health care,
- Education

Produce worth approximately 100,000 kina is carried over this crossing every year

Over 3000 crossings are made by school students every year

The crossing is frequently cut during the wet season



40kg of coffee – 2nd trip of the day